

Introduction

JetDBAccess, which is part of the visualization package JetLink, is for storing data from a Jetter PROCESS-PLC to an ODBC data base (e.g. Microsoft Access).

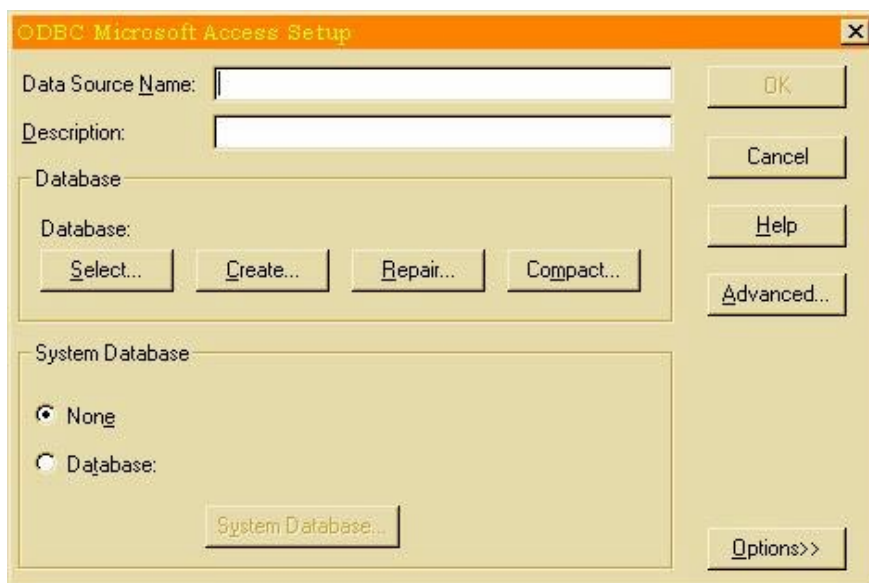
For this purpose, an ODBC data source has to be created first.

Creating an ODBC Data Source

- In order to activate the ODBC Data Source Administrator, open the Windows Control Panel directory by selecting *Start / Settings / Control Panel* from the task bar. There, activate *ODBC Data Sources* by double-clicking on the corresponding icon.



- Select the tab *User DSN*.
- Click on *Add*.
- Select *Microsoft Access Driver (*.mdb)* by double-clicking.
- Now, the dialog window *ODBC Microsoft Access Setup* opens. Enter the *Data Source Name*.



- Click on the button *Select* in the Data Base section of this dialog, select the data base to be linked with, and confirm with *OK*. The path of the selected data base is displayed in the dialog window.

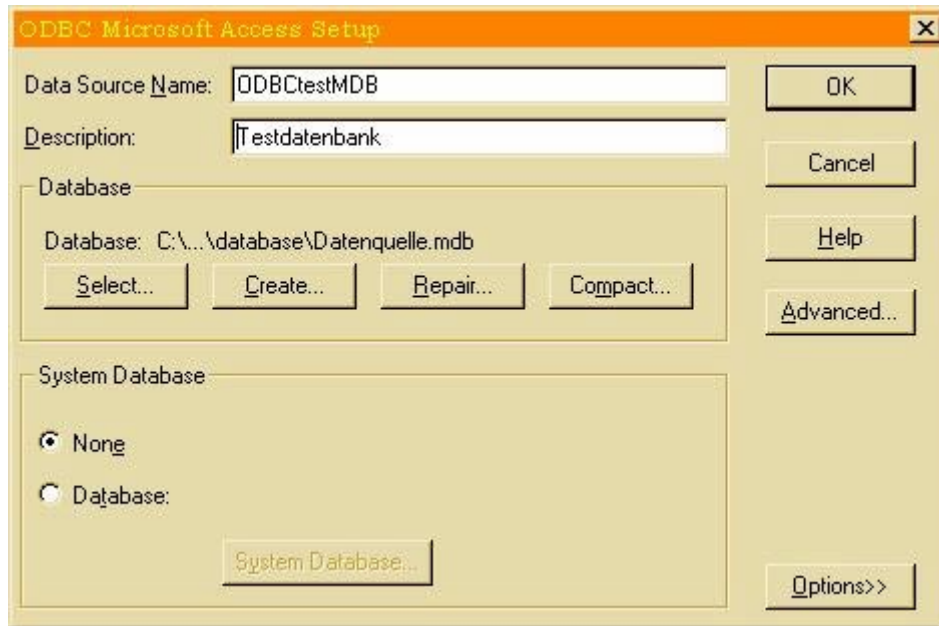
All rights reserved.
Jetter AG reserves the right to make alterations to its products in the interest of technical progress. These alterations need not be documented in every single case.

This application note and the information contained herein have been compiled with due diligence. However, Jetter AG assumes no liability for printing or other errors or damages arising from such errors.

The brand names and product names used in this document are trade marks or registered trade marks of the respective title owner.

Jetter AG
Gräterstrasse 2
D-71642 Ludwigsburg
Germany

Telephone – Switchboard: ++49-71 41-25 50-0
Telephone - Sales: ++49-71 41-25 50-5 30
Telephone - Technical Hotline: ++49-71 41-25 50-4 44
Telefax: ++49-71 41-25 50-4 25
E-Mail – Sales: sales@jetter.de
E-Mail – Technical Hotline: hotline@jetter.de
Internet Address: http://www.jetter.de

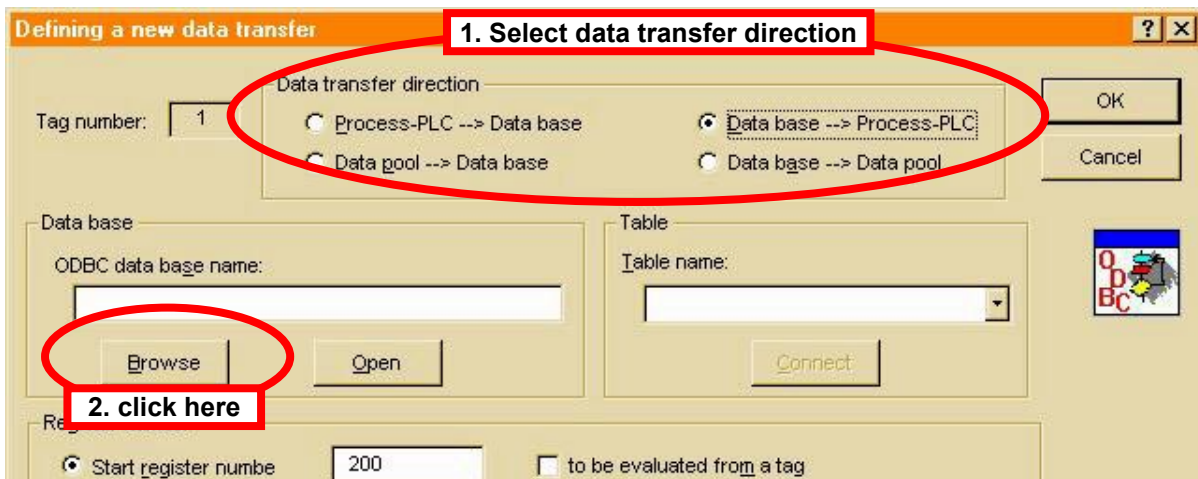


- Exit the window *ODBC Microsoft Access Setup* with OK.

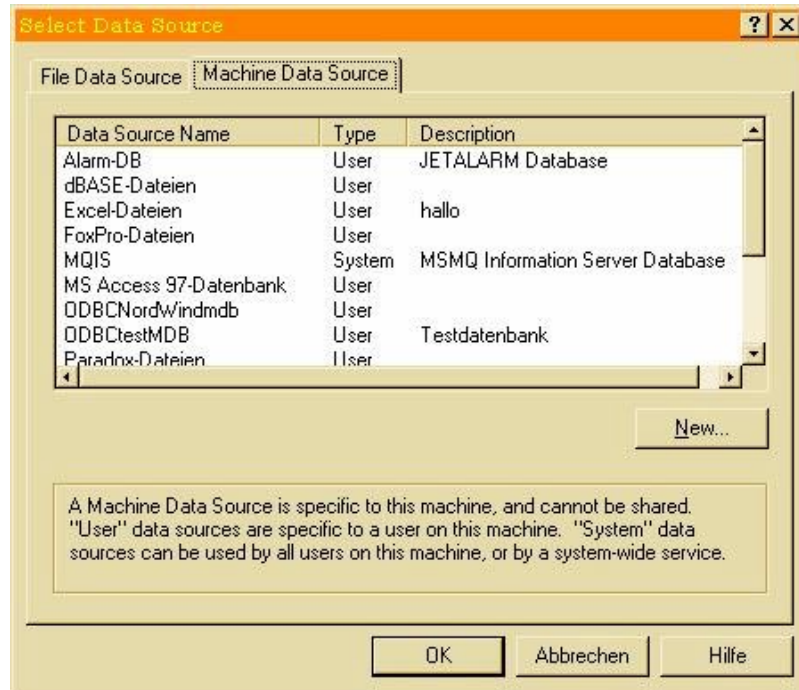
Now, ODBC linking of the database is completed.
The next step is to set up JetDBAccess accordingly.

SetDBAccess Settings

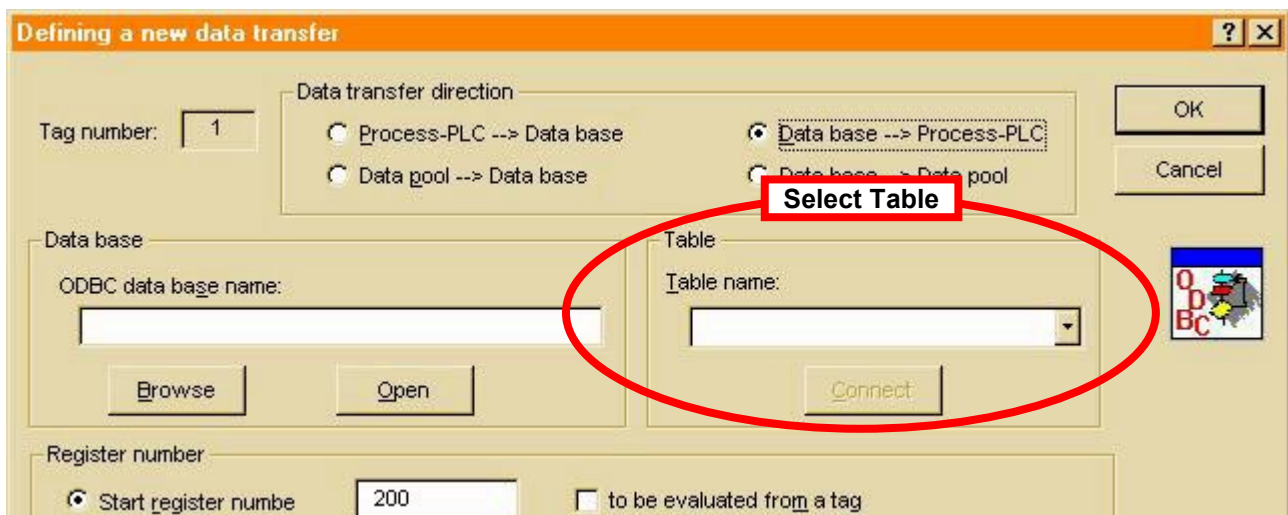
- Open JetDBAccess.
- Create a new list by clicking on *File / New* in the menu bar.
- Click in the menu bar on *Edit / Define* to open the dialog window *Defining a new data transfer*.
- Select the data transfer direction by checking the corresponding box.



- Click on the button *Browse* to select the ODBC data source. A new dialog opens:



- Select the tab *Machine Data Source*.
- Now you can select the ODBC Data Source Name which has been created previously in the ODBC Data Source Administrator. Confirm with *OK*.
- In the section "Table" of the dialog window, select the name of the table which should be used by JetDBAccess for reading or writing data. After that, click on *Connect*.

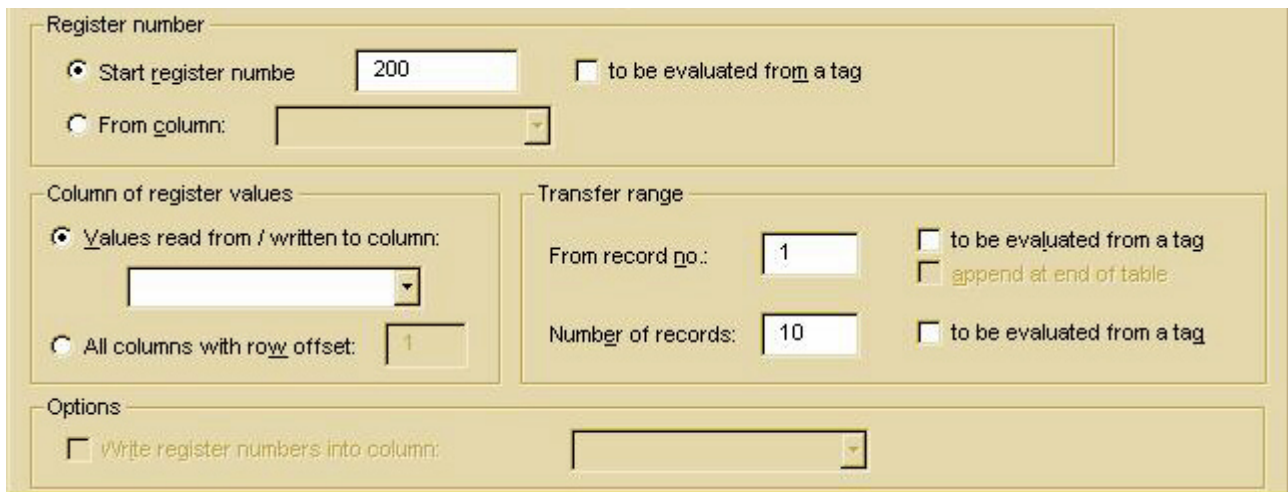


Now, the following window should appear on your display:



Close this window by clicking on *OK*.

- Specify additional registers and values, which are relevant to communications, in the lower section of the dialog window *Defining a new data transfer*.



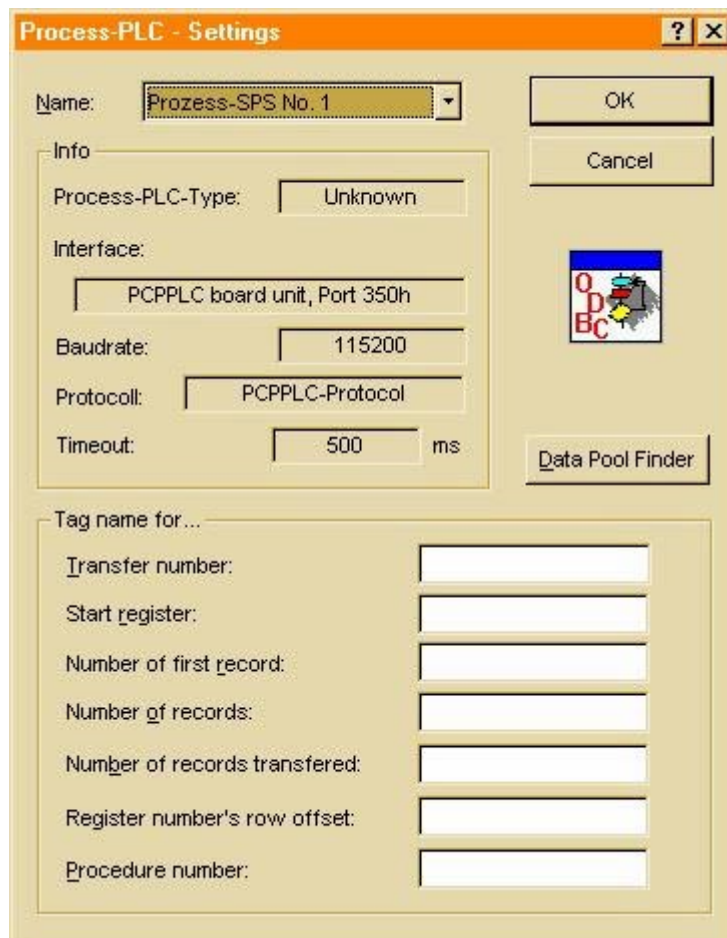
Exit the dialog window by clicking on *OK*.

Communication with the PROCESS PLC

- Select *Settings / Process PLC* from the JetDBAccess menu bar. The following dialog opens:



- Here, you can either add a new PROCESS-PLC definition by clicking on *Add*, or set up an existing data exchange definition by clicking on *Setup*. In both cases, the following dialog opens:



- In this dialog window you have to specify a tag name for the transfer number, e.g. dbtransferringnumber. All other tag names can be specified optionally.
- In case the record number has to be set by the connected controller, the given tag must be linked to a register within the controller through the Data Pool Configuration program.
- The tags for *Start register*, *Number of the first record*, etc. can likewise be linked to registers of the controller.
- When you have entered all required information close the window with *OK*.

Principle of Operation

Data transfer is initiated once a positive number, which corresponds to the record number of a defined data transfer, has been written into the tag dbrecordnumber (or into the controller register linked to it).



If JetDBAccess was able to successfully complete the data transfer, the value of this tag is reset to zero. If an error occurred during data transfer, an error code, consisting of a negative number, is written into the tag. This error code can be evaluated by the application program.

Error Code List

- 0 Data transmission free from errors
- 1 Invalid record number
- 2 Invalid start register number
- 3 Invalid number of the first data record to be read (written)
- 4 Invalid quantity of data records
- 5 Invalid table name
- 6 Invalid column name
- 7 Invalid format of register number column (no integer)
- 8 First data record number > total number of data records in the table
- 9 Error writing to the database
- 10 Invalid tag name (unknown tag)
- 11 Failure to define a tag required during runtime.
- 12 Invalid date/time style
- 13 Error executing SQL procedure
- 14 Data transfer was interrupted since the connection was offline.
- 15 Invalid tag name for write access to / read access from data pool